

Redemptorist St. Gerard School

February 25, 2019

Weekly Parent Newsletter



This Week at a Glance

Monday, Feb. 25

4th-8th Title I for ELA after school

Tuesday, Feb. 26

4th-8th Title I for Math after school

Wednesday, Feb. 27

Mass @ 8am

4th-8th Title I for ELA after school

Thursday, Feb. 28

5th Grade Fieldtrip

4th-8th Title I for Math after school

Family Night 5:30-6:30pm

Friday, March 1

Mardi Gras Parade @ 1pm

Saturday, March 1-Sunday, March

10

Mardi Gras Break

Upcoming Events

- ◆ Remaining Saturday LEAP Academy Dates: March 16 & 23

Read! Read! Read!!!

Students should be reading every chance that they get! It builds vocabulary, reading skills, and reading comprehension. We have asked teachers to have a reading log for each student that is checked weekly.

Here are some tips on helping your child with their reading log:

- Check their reading log daily and see if they have read.
- Read with them at home, as much as possible. They will see that it is important to you, so they will make it important.
- Make sure they are reading at home. Just have them sit for 10 minutes and read a book, an article in a magazine, or even the newspaper.

Registration for 2019-2020 School Year

Registration forms for 2019-2020 school are due by Feb. 28th. If you are planning to return to RSG next year, please make sure that you return the paperwork by the due date, next Thursday, Feb. 28th.

If you have a Kindergartener or a new student who would like to apply, please call the office to find out about ACE and ARETE scholarships available which can help with funding of tuition. We are not accepting any new Louisiana Scholarship students for the 2019-2020 school year,

Tips for Reading an Article on LEAP test:

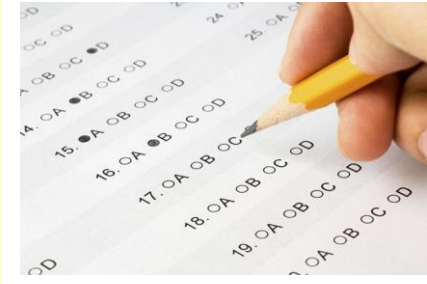
- Read over the questions for the article first. Then, you will know what specific information you need to look for.
- Read through the article.
- Annotate as you read.
- Highlight or underline important words or phrases.
- Circle any words that you may not know.
- Find the main idea of the article or of each paragraph if it is a lengthy article.
- Summarize the article in a sentence.
- Go back to the questions and look in the article for the answers

but there are other scholarships available that cover partial tuition cost.

Please contact the office with any questions, and we will be glad to help.

If you know of anyone interested in applying for our Pre-K program for next year, they must apply online at EBRearlychildhood.com and submit the appropriate documents. Please have them contact Ms. Ashley Pizzolato in our office for more details.

Motivation Theme of the Week: Practice Makes Perfect



When we play a sport, how many days a week do we practice to make sure we are ready for the game? When we play an instrument, how many hours a day do we practice in order to make sure that we can play the piece for the next rehearsal? Practice is what helps us in making our skills better in sports and in music. Practice is also what helps our students in their test taking skills.

Standardized tests are set up in a particular way, something that students

are not always use to seeing; the format, the wording, the technology components can be tricky if they aren't familiar with the test. That is why it is so important for students to utilize the practice tests online, for them to get a feel for the test and feel comfortable and familiar with the different aspects of the test.

Students are being exposed to the test in various ways at school, but as a parent, please reinforce that exposure at home.

Where can I find LEAP Practice tests?

Here are some websites for LEAP practice:

Parent Guide to LEAP Practice tests—this has all of the information and links on where to go for students to practice, as well as logins and passwords for practice tests

https://www.louisianabelieves.com/docs/default-source/assessment/parent-guide-to-the-leap-2025-practice-tests.pdf?sfvrsn=9f52921f_8

LEAP Practice Test link—this is the login page for the practice test; you will need the login and password (teach2025) to access the test

<https://wbte.drcedirect.com/LA/#login>

PARCC Practice Test link—this test is the same as the LEAP with more problems

<https://parcc-assessment.org/released-items/>

“Don’t let what you can’t do stop you from doing what you can do.”

-John Wooden

No Mardi Gras Holiday Camp

Due to the lack of students that registered for our Mardi Gras Holiday Camp, we will NOT have our holiday camp during Mardi Gras break.



Happu Mardi Gras!!!